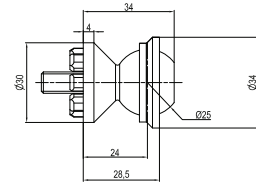


## Ball mounts



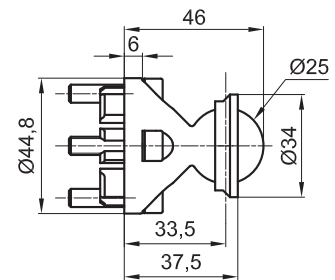
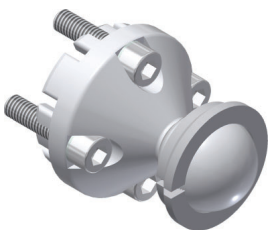
### GR8SCB30 Ball mount 30



|          | Tightening torque | Screw |
|----------|-------------------|-------|
| GR8SCB30 | 25 Nm             | M8x40 |

Material: Steel  
Weight: 0,134 kg

### GR8SCB45 Ball mount 45



|          | Tightening torque | Screw |
|----------|-------------------|-------|
| GR8SCB45 | 25 Nm             | M6x25 |

Material: Steel  
Weight: 0,252 kg