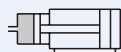




**MHBU**

Unclamping Booster



### Features

- Provide hydraulic power to direct drive or motor spindle.
- Modular design.
- With oil volume sensing device.

### Specification

Model	MHBU
Bore size	100
Intensified pressure ratio	12.7
Discharging volume (c.c.)	70 / 110 (*1)
Operating pressure range (MPa)	0.4~0.6 (*2)
Ambient temperature (°C)	0~+60
Installation	Vertical installation (*3)
Operating oil	ISO VG32 or equivalent
Voltage	DC24V / AC110V / AC220V
Sensor switch	RCI (2m) (Please refer to page 8-13)
Weight (kg)	8.5

\*1. The chosen output capacity must be at least 20% to 30% greater than the requirement.

\*2. Suggest to set the operating pressure for  $0.6 \pm 0.1$  MPa.

\*3. The product must be higher than the working hydraulic cylinder.

\*4. The product is the pressure driver and has to be used with hydraulic unclamping cylinder.

### Order example

**MHBU — 100 — 12M — 70 — 4E1 — DC24**

MODEL

BORE SIZE

WITH  
SENSOR

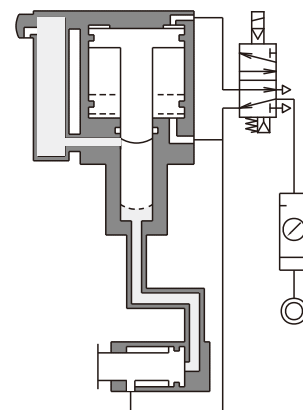
INTENSIFIED  
PRESSURE RATIO  
12: 12.7

DISCHARGING  
VOLUME  
70: 70 c.c.  
110: 110 c.c.

SOLENOID VALVE  
4E1: MVSC-300-4E1

VOLTAGE  
AC110V(50/60)Hz  
AC220V(50/60)Hz  
DC24V

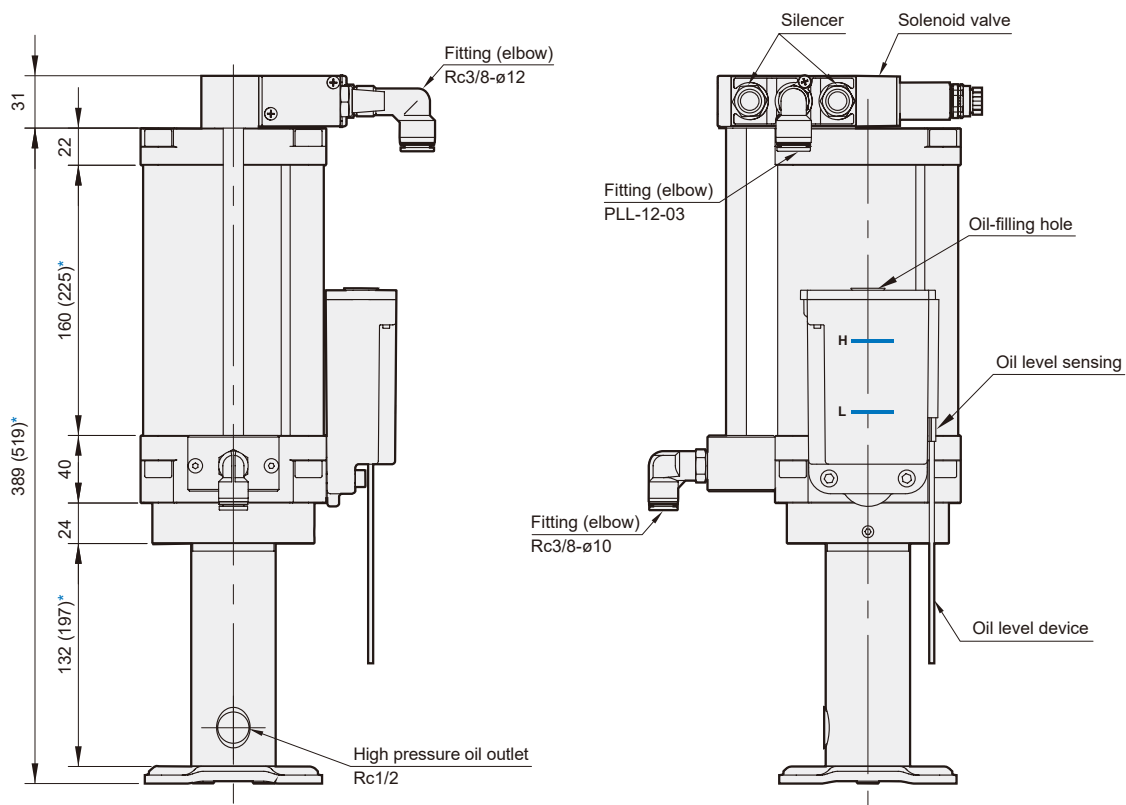
### Circuit



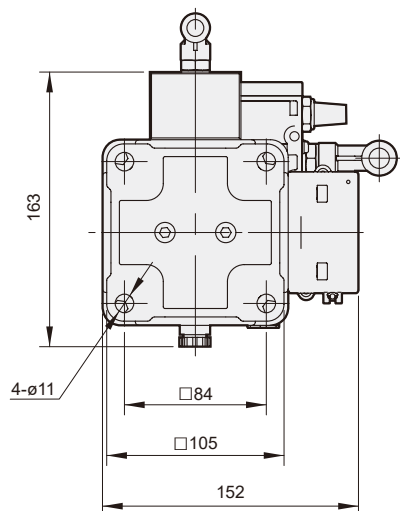
### Theoretical output force

Operating pressure (MPa)	0.4	0.5	0.6
Oil pressure output force (kgf/cm <sup>2</sup> )	50.8	63.5	76.2

### MHBU-100



\* ( ) value for 110 c.c.



#### Oil cup capacity

