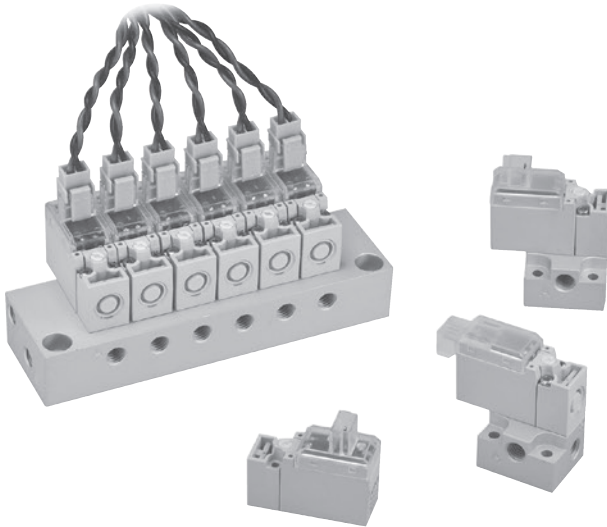


MVDY-100 series

DIRECT ACTING TYPE SOLENOID VALVE



mindman



Specification

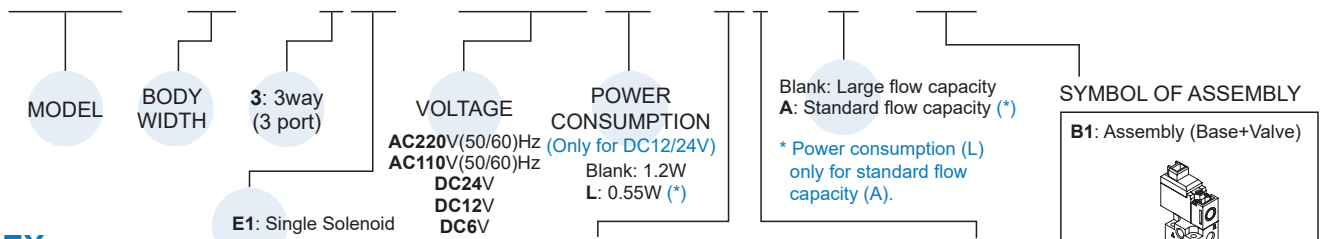
Model	3E1	3E1-**-A	3E1-**-L-A
No. of port	3		
No. of position	2		
Medium	Air		
Operating perssure range	0~0.7 MPa	0~0.9 MPa	0~0.85 MPa
Proof pressure	1 MPa		
Effective orifice	P→A	0.28 mm ²	0.09 mm ²
	A→R	0.35 mm ²	
Reponse time	DC: 4 ms, AC: 20ms		
Max. operating frequency	5 Hz		
Ambient temperature	+5~+50°C		
Voltage	AC110V, 220V (50/60)Hz, DC24/12/6V		DC24/12V
Power consumption	AC=1.6/2.5VA, DC=1.2W		0.55W
Available voltage range	±10%		
Insulation class	B class		
Weight	12 g		

* Pressure is 0.5 MPa, at rated voltage.

* LED indicator as standard.

Order example of valve

MVDY – 100 – 3E1 – AC110 □ – LJ1 – A – M3

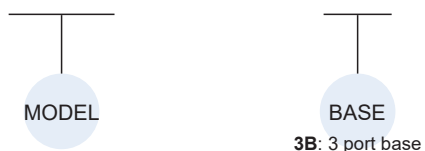


EX

- Valve
MVDY-100-3E1-AC220-LJ1-A × 1 pc.
- Assembly (5 valve + 5 manifold)
MVDY-100-3E1-AC220-LR2-M5 × 1 set

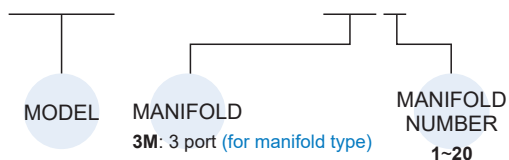
Order example of base

MVDY – 100 – 3B1



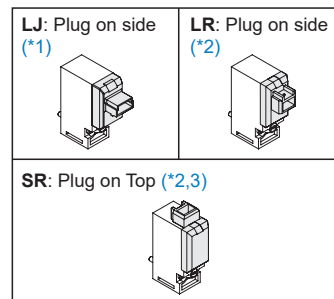
Order example of manifold

MVDY – 100 – 3M2



* Starting from 11 stations, manifolds are made to order.

ELECTRIC CONNECTION

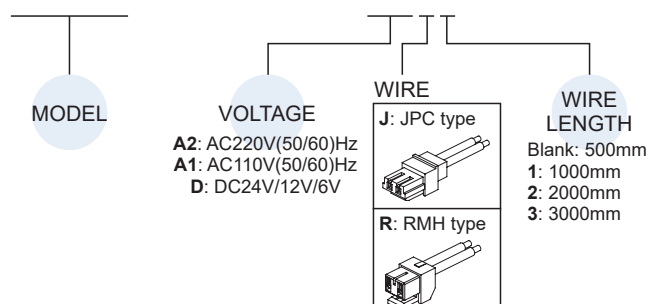


WIRE LENGTH
Blank: 500mm
1: 1000mm
2: 2000mm
3: 3000mm

*1. Plug with flying leads JPC type.
*2. Plug with flying leads RMH type.
*3. DC voltage only.

Order example of wire

MVDY – 100 – WA2J2



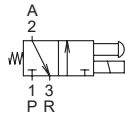
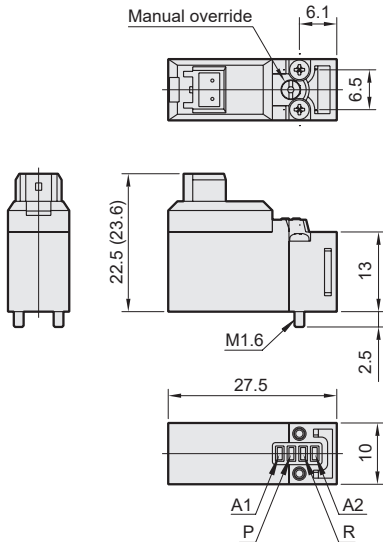
MVDY-100 Dimensions

DIRECT ACTING TYPE SOLENOID VALVE



MVDY-100-3E1

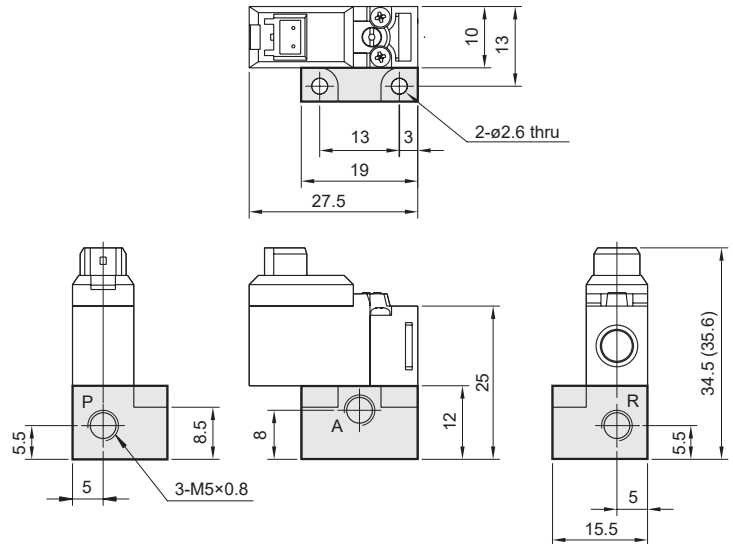
() : Dimension for LJ plug type.



MVDY-100-3B1

3 port base

() : Dimension for LJ plug type.



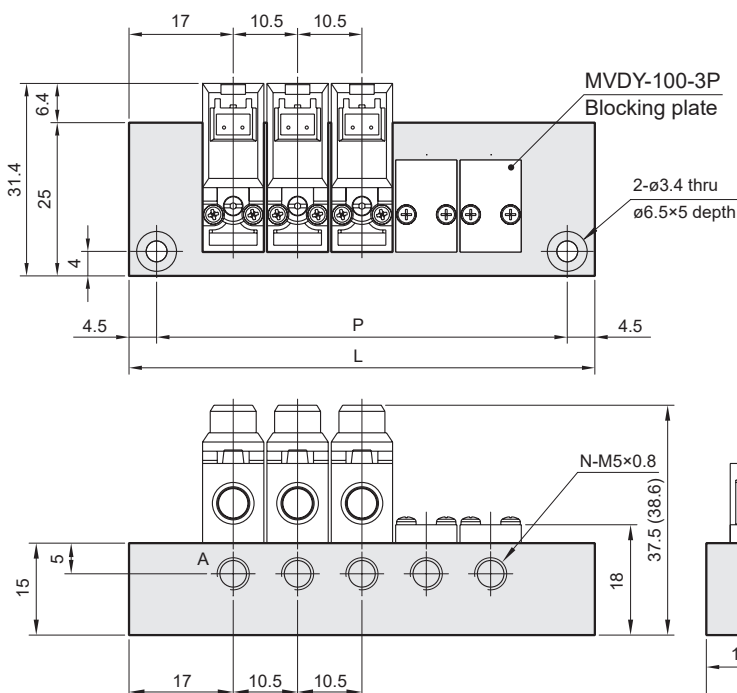
Manifold of solenoid valve

MVDY-100-3M*

3 port (for manifold type)

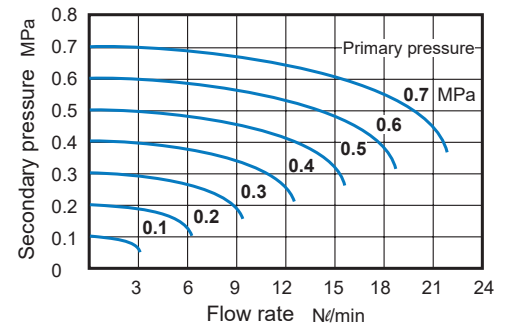
No. of stations (N)	P	L	No. of stations (N)	P	L
1	25	34	6	77.5	86.5
2	35.5	44.5	7	88	97
3	46	55	8	98.5	107.5
4	56.5	65.5	9	109	118
5	67	76	10	119.5	128.5

P: (No. of stations-1)×10.5+25
L: (No. of stations-1)×10.5+34

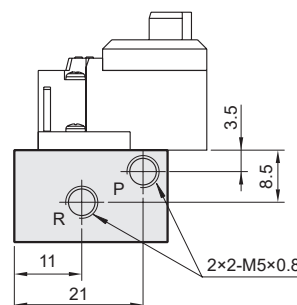
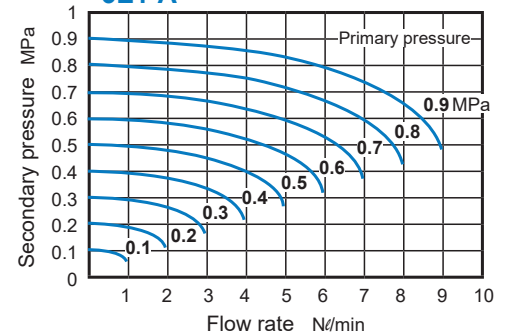


Flow features

3E1



3E1-A



() : Dimension for LJ plug type.