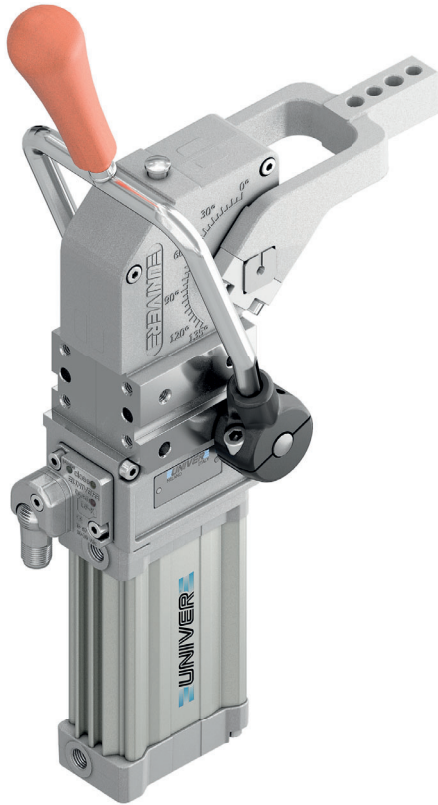


# UCBT 40

Pneumatic power clamps Ø40 mm with central hand lever

Pneumatic power clamps with compensation system, toggle-joint mechanism and stepless adjustable opening angle, typically used for handling and holding metal sheets in welding applications



- Lightweight aluminium construction
- Compact dimensions
- Integrated compensation system up to 2,0 mm
- Central hand lever standard supplied
- Fully optical electronic sensor or pneumatic sensor
- Fixing pattern on 2 sides
- Manual unlocking in case of air loss
- Self-holding system for open position available
- Clamping arm in aluminium or steel

## CHARACTERISTICS

Operating temperature	5° ÷ 45° C
Min./Max. Operating pressure	0,4 / 0,6 MPa
Opening angle*	0° ÷ 135°
Bore Ø	40 mm
Holding moment	600 Nm
Clamping moment (0,5 MPa)	170 Nm
Weight (clamping arm not included)	2,1 Kg
Pneumatic supply ports	G1/8 on both sides
Sensor	electronic (optical)
Supply voltage	10 ÷ 30 Vdc
IP code	IP65

\*The opening angle range may vary according to the arm position and style.

## CODIFICATION KEY

UC	B	T	40	O	E	A	K	0	
1	2	3	4	5	6	7	8	9	10



COMPENSATION



LIGHTWEIGHT



IRREVERSIBLE



ANGLE ADJUSTMENT



OPTICAL SENSOR



COMPACT

1

**SERIES**  
UC = UNICLAMP Power clamps

2

**STANDARD**  
B = European standard

3

**VERSION**  
T = Pneumatic with central hand lever

4

**SIZE**  
40 = Ø40 mm

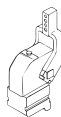
5

**ARM POSITION**

V = 90°



O = 180°



N = No arm



6

**ARM STYLE**  
C = Central, 15 mm offset  
D = Right, 15 mm offset  
S = Left, 15 mm offset  
E = Central, 45 mm offset  
F = Right, 45 mm offset  
L = Left, 45 mm offset  
N = No arm  
For other versions contact our Sales Dept.

7

**ARM TYPE**  
A = Aluminium  
S = Steel  
N = No arm

8

**SENSOR**  
N = No sensor (with protection plate)  
K = Electronic sensor PNP, M12 (DF-K)  
D = Pneumatic sensor (DF-UPNW)  
J = Electronic sensor NPN, optical (DF-J)  
Y = Electronic sensor PNP, M12 (DF-Y) white LED

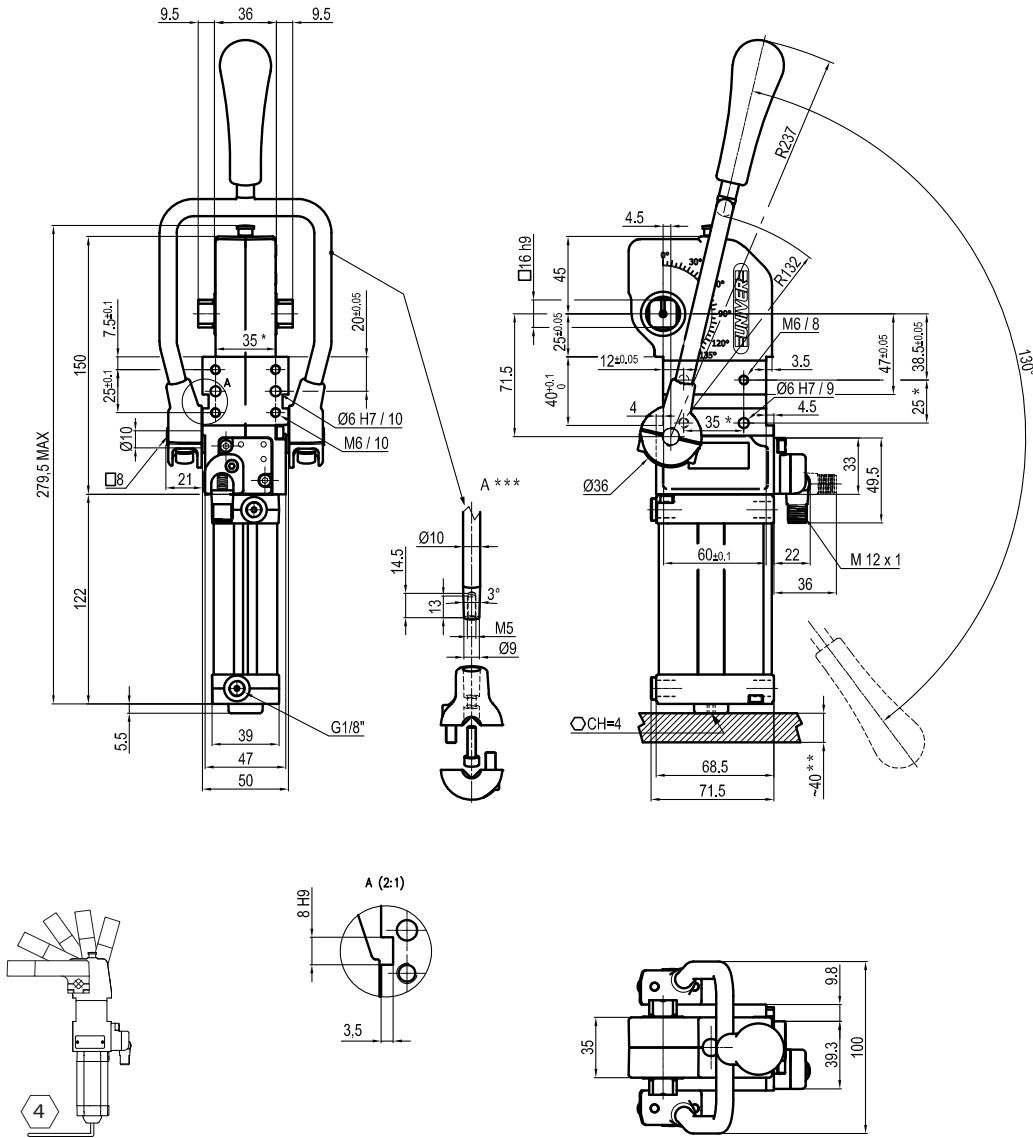
9

**PRODUCT REVISION**  
Assigned by UNIVER

10

**ATEX**  
X = ATEX option  
See ATEX Catalogue for types and versions

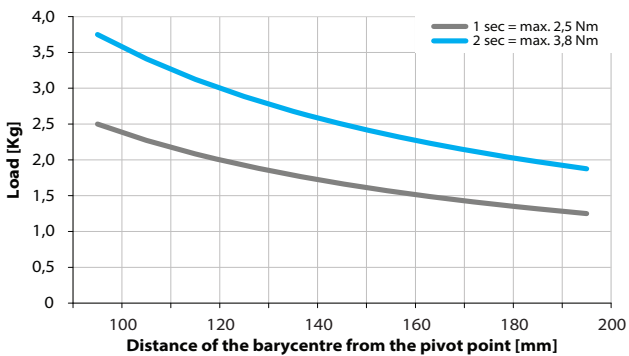
2



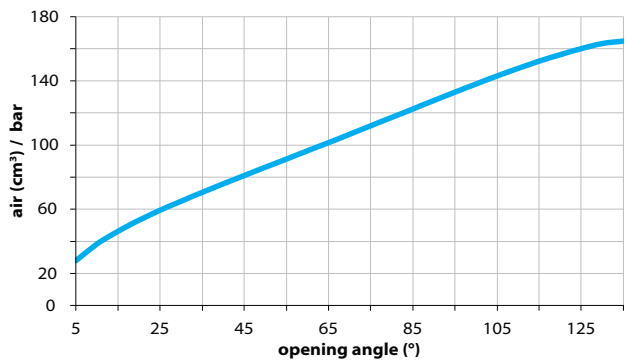
\*TOLERANCE BETWEEN DOWELS ± 0,02 BETWEEN SCREW HOLES ± 0,1  
 \*\*AREA TO ACCESS ANGLE ADJUSTMENT  
 \*\*\*DIMENSIONS TO BE RESPECTED IN CASE OTHER MANUAL LEVERS ARE USED

### Maximum Applicable Load

Pressure: 5 bar - 90° cycle time (Open - Close)

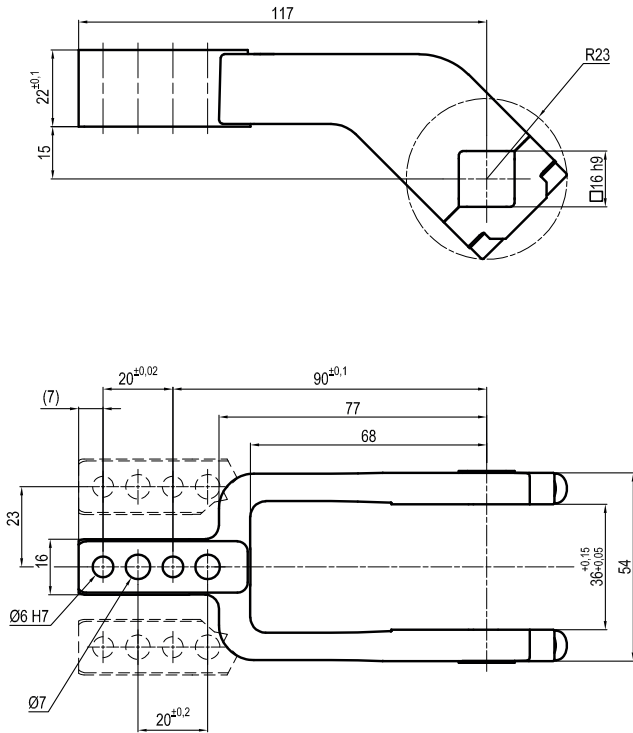


### Air Consumption per Cycle

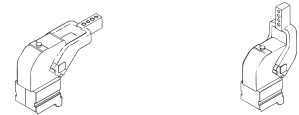
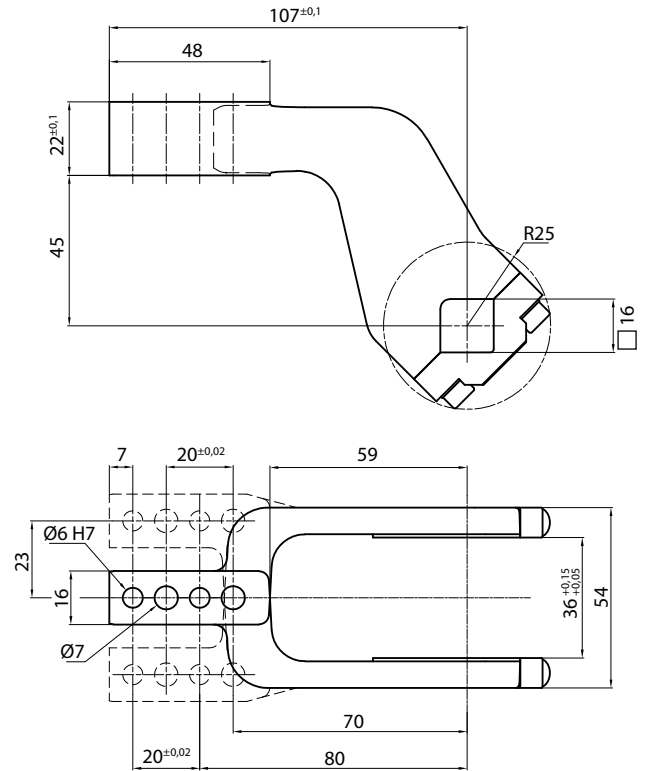


## Clamping Arms

### Arm Offset 15mm



### Arm Offset 45mm



Armcode	Offset	Material	Arm style	Weight (Kg)	Opening angle (90°)	Opening angle (180°)
LKP01CST	15	ALUMINIUM	CENTRAL	0,2	0÷135°	0÷125°
LKP01DST	15	ALUMINIUM	RIGHT	0,2	0÷135°	0÷125°
LKP01SST	15	ALUMINIUM	LEFT	0,2	0÷135°	0÷125°
UP120151441S	15	STEEL	CENTRAL	0,4	0÷135°	0÷125°
UP120151442S	15	STEEL	RIGHT	0,4	0÷135°	0÷125°
UP120151443S	15	STEEL	LEFT	0,4	0÷135°	0÷125°
UKP01E	45	ALUMINIUM	CENTRAL	0,25	0÷125°	0÷135°
UKP01F	45	ALUMINIUM	RIGHT	0,25	0÷125°	0÷135°
UKP01L	45	ALUMINIUM	LEFT	0,25	0÷125°	0÷135°
UKP01ES	45	STEEL	CENTRAL	0,4	0÷125°	0÷135°
UKP01FS	45	STEEL	RIGHT	0,4	0÷125°	0÷135°
UKP01LS	45	STEEL	LEFT	0,4	0÷125°	0÷135°

## Sensors



Electronic (optical)

DF-K PNP M12  
DF-J NPN M12  
DF-Y PNP M12 White LED



Pneumatic

DF-UPNW

## Accessories



Handlever

UBTF2540



Self holding system

UBK46P16 For arm 15 offset  
UBK46P16-45 For arm 45 offset