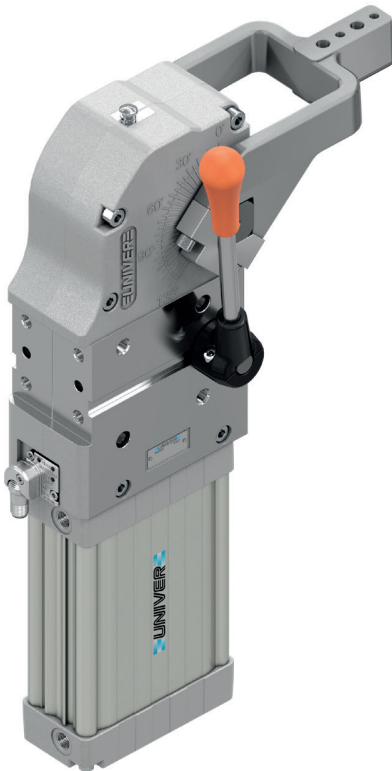


UCBM 80

Pneumatic power clamps Ø80 mm with hand lever

Pneumatic power clamps with compensation system, toggle-joint mechanism and stepless adjustable opening angle, typically used for handling and holding metal sheets in welding applications

- Lightweight aluminium construction
- Integrated compensation system up to 2,9 mm
- Hand lever mount on both sides
- Fully optical electronic sensor or pneumatic sensor
- Fixing pattern on 4 sides
- Manual unlocking in case of air loss
- Self-holding system for open position available
- Clamping arm in aluminium or steel



CHARACTERISTICS

Operating temperature	5° ÷ 45° C
Min./Max. Operating pressure	0,4 / 0,6 MPa
Opening angle*	0° ÷ 135°
Bore Ø	80 mm
Holding moment	4000 Nm
Clamping moment (0,5 MPa)	1100 Nm
Weight (clamping arm not included)	9,5 Kg
Pneumatic supply ports	G1/4 on both sides
Sensor	electronic (optical)
Supply voltage	10 ÷ 30 Vdc
IP code	IP65

*The opening angle range may vary according to the arm position and style.

CODIFICATION KEY

UC	B	M	80	O	E	A	K	0	
1	2	3	4	5	6	7	8	9	10



COMPENSATION



LIGHTWEIGHT



IRREVERSIBLE



ANGLE ADJUSTMENT



OPTICAL SENSOR

1

SERIES
UC = UNICLAMP Power clamps

2

STANDARD
B = European standard

3

VERSION
M = Pneumatic with hand lever

4

SIZE
80 = Ø 80 mm

5

ARM POSITION

V = 90°

O = 180°

N = No arm

6

ARM STYLE
C = Central, 20 mm offset
D = Right, 20 mm offset
S = Left, 20 mm offset
E = Central, 45 mm offset
F = Right, 45 mm offset
L = Left, 45 mm offset
N = No arm
For other versions contact our Sales Dept.

7

ARM TYPE
A = Aluminium
S = Steel
N = No arm

8

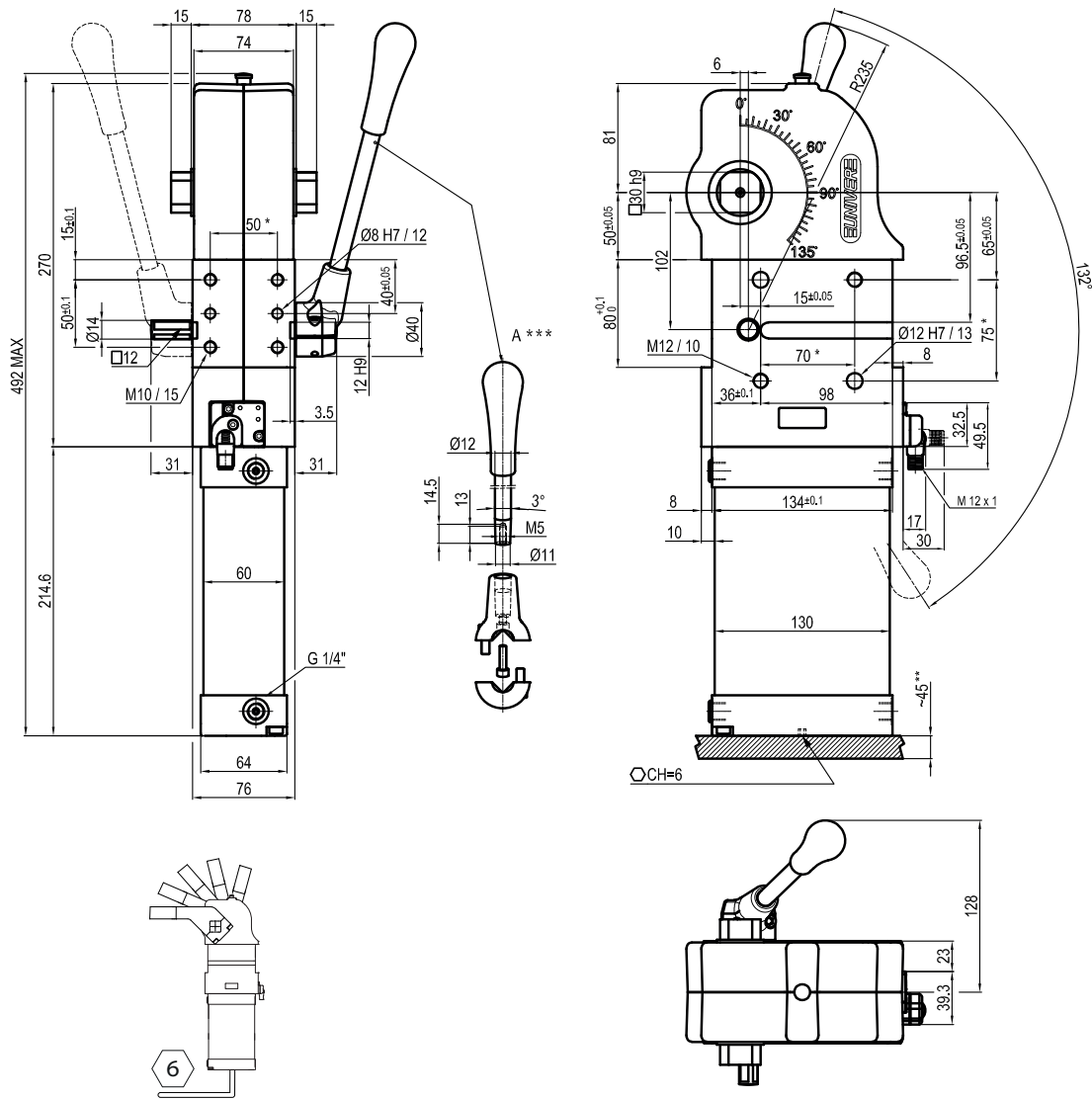
SENSOR
N = No sensor (with protection plate)
K = Electronic sensor PNP, M12 (DF-K)
D = Pneumatic sensor (DF-UPNW80)
J = Electronic sensor NPN, optical (DF-J)
Y = Electronic sensor PNP, M12 (DF-Y) white LED

9

PRODUCT REVISION
Assigned by UNIVER

10

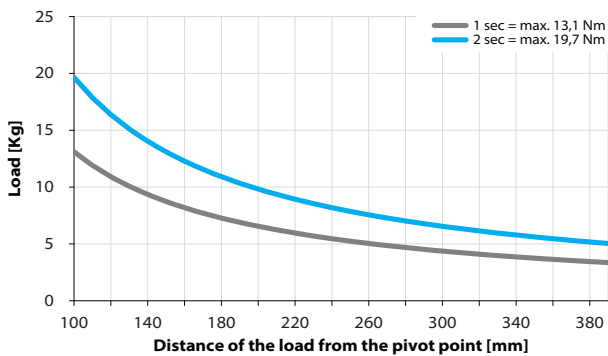
ATEX
X = ATEX option
See ATEX Catalogue for types and versions



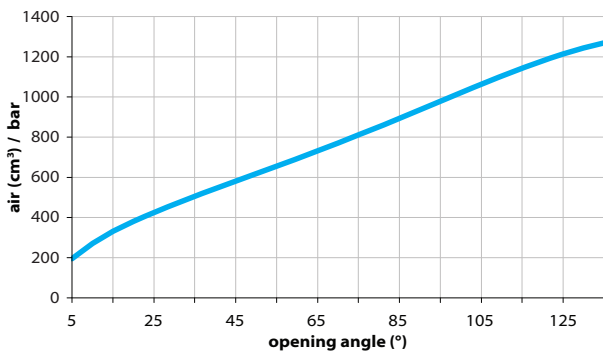
* TOLERANCE BETWEEN DOWELS ± 0,02, BETWEEN SCREW HOLES ± 0,1
 ** AREA TO ACCESS ANGLE ADJUSTMENT
 *** DIMENSION TO BE RESPECTED IN CASE OTHER MANUAL LEVERS ARE USED

Maximum Applicable Load

Pressure: 5 bar - 90° cycle time (Open - Close)

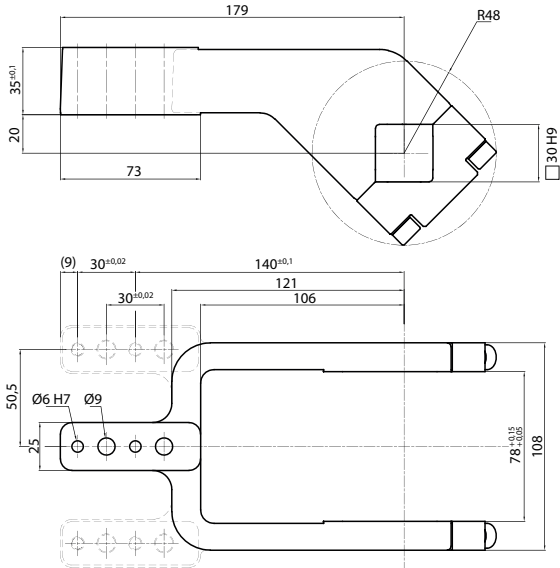


Air Consumption per Cycle

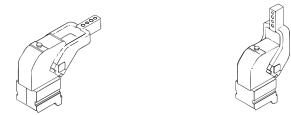
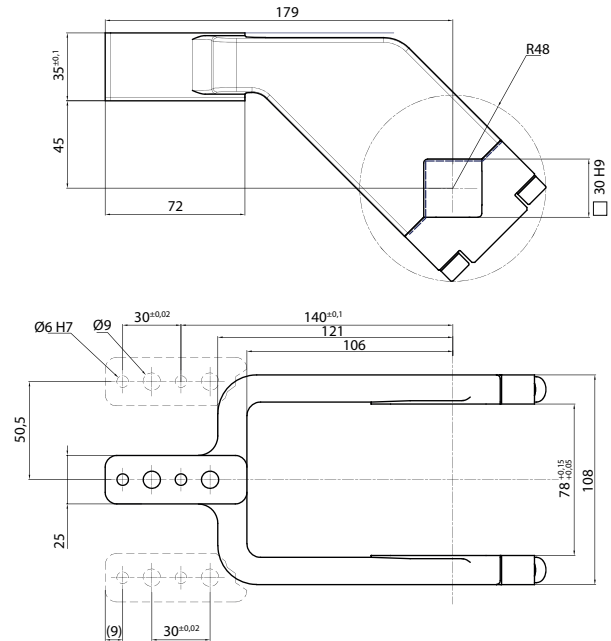


Clamping Arms

Arm Offset 20mm



Arm Offset 45mm



Armcode	Offset	Material	Arm style	Weight (Kg)	Opening angle (90°)	Opening angle (180°)
LKP80C	20	ALUMINIUM	CENTRAL	0,6	0÷135°	0÷105°
LKP80D	20	ALUMINIUM	RIGHT	0,6	0÷135°	0÷105°
LKP80S	20	ALUMINIUM	LEFT	0,6	0÷135°	0÷105°
UKP80CS	20	STEEL	CENTRAL	2,26	0÷135°	0÷105°
UKP80DS	20	STEEL	RIGHT	2,3	0÷135°	0÷105°
UKP80SS	20	STEEL	LEFT	2,3	0÷135°	0÷105°
UKP80E	45	ALUMINIUM	CENTRAL	0,6	0÷135°	0÷125°
UKP80F	45	ALUMINIUM	RIGHT	0,6	0÷135°	0÷125°
UKP80L	45	ALUMINIUM	LEFT	0,6	0÷135°	0÷125°
UKP80ES	45	STEEL	CENTRAL	2,2	0÷135°	0÷125°
UKP80FS	45	STEEL	RIGHT	2,2	0÷135°	0÷125°
UKP80LS	45	STEEL	LEFT	2,2	0÷135°	0÷125°

Sensors



Electronic (optical)

DF-K PNP M12
DF-J NPN M12
DF-Y PNP M12 White LED



Pneumatic

DF-UPNW80

Accessories



Handlever

UBF2580



Self holding system

UBK46P30