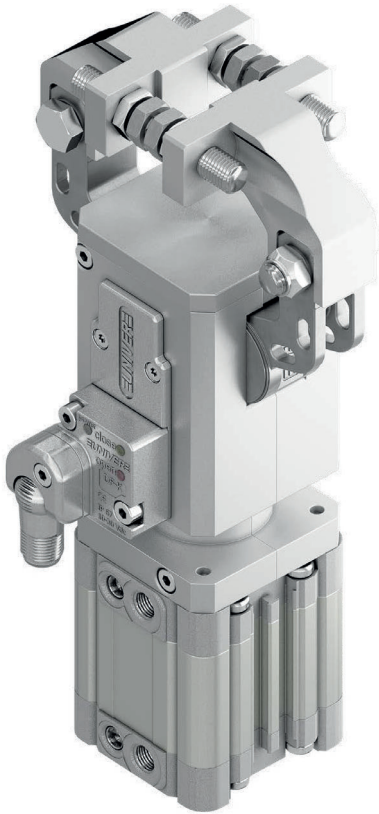


# UGPS 40

Pneumatic gripper unit Ø40 mm

Pneumatic gripper unit Ø40 mm with single or double arms, typically used on End of Arm Tooling systems for handling work pieces.

- Compensation 1,5 mm (single) and 2,2 (double)
- Stepless adjustable opening angle
- Toggle-joint mechanism
- Two sided sensor mounting position
- Integrated pneumatic cushioning system
- 360° orbital orientation thanks to many different mounting elements
- Tips customisation



4

## CHARACTERISTICS

Operating temperature	5° ÷ 45° C
Min./Max. Operating pressure	0,4 / 0,6 MPa
Opening angle	10° ÷ 50° (single) 10° ÷ 60° (double)
Bore Ø	40 mm
Holding moment	800 N
Clamping moment (0,5 MPa)	1600 N (single) 800 N (double)
Weight (without tips)	1,75 Kg
Pneumatic supply ports	G1/8
Sensor	electronic (optical)
Supply voltage	10 ÷ 30 Vdc
IP code	IP 65

## CODIFICATION KEY

UGP | S | 40 | D1 | A | K | R | 3 | 0 | | |

1 2 3 4 5 6 7 8 9 10



COMPENSATION



LIGHTWEIGHT



IRREVERSIBLE



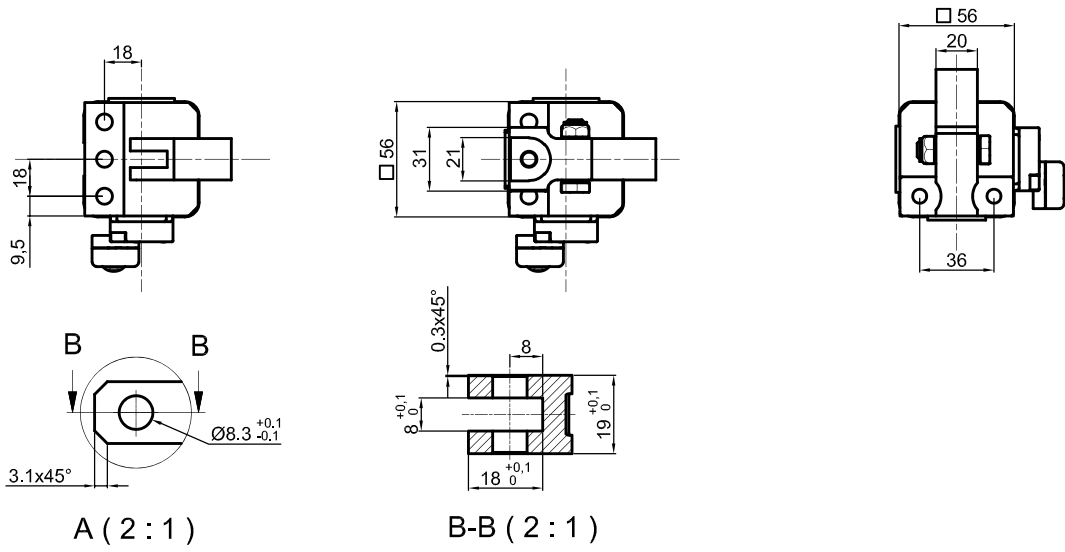
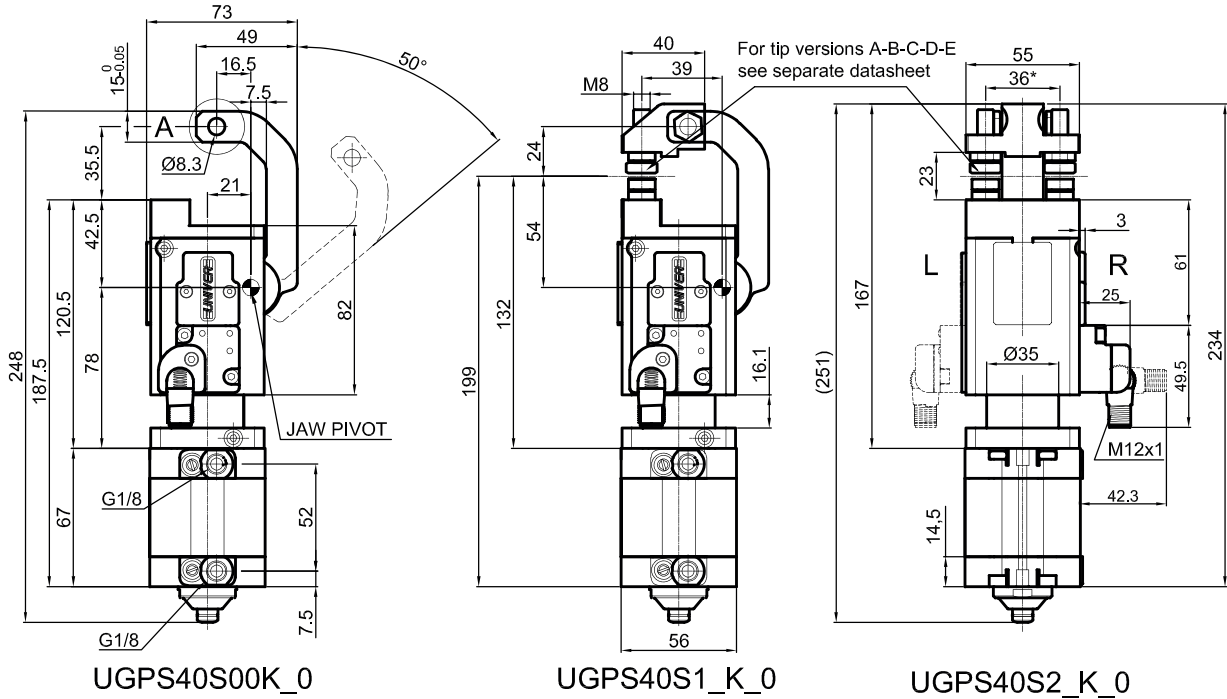
ANGLE ADJUSTMENT



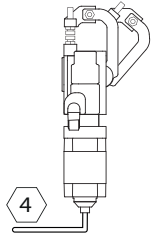
OPTICAL SENSOR

1	<b>SERIES</b> UGP = UNICLAMP Gripper units	7	<b>SENSOR MOUNTING</b> N = No sensor R = Right (ports side) L = Left
2	<b>ARM MATERIAL</b> S = Steel	8	<b>MOUNTS</b> 0 = No mount 1 = Middle flange mount (LGP40MP) 2 = 360° orbital mount, ball Ø25 (LGP40MO25) 3 = 360° orbital mount, ball Ø30 (LGP40MO30) 4 = 360° orbital mount, ball Ø40 (LGP40MO40) 5 = 360° orbital mount, ball Ø45 (LGP40MO45) 6 = Rear flange mount (LGP40PT080) 7 = Rear flange mount (LGP40PT110)
3	<b>SIZE</b> 40 = Ø 40 mm	9	<b>PRODUCT REVISION</b> Assigned by UNIVER
4	<b>ARM</b> S0 = Single arm, without jaws S1 = Single arm, jaws set for 1 pair of tips S2 = Single arm, jaws set for 2 pairs of tips D0 = Double arms, without jaws D1 = Double arms, jaws set for 1 pair of tips D2 = Double arms, jaws set for 2 pair of tips	10	<b>ATEX</b> X = ATEX option See ATEX Catalogue for types and versions
5	<b>TIPS</b> 0 = No tips A = Knurled tips B = Self-adjusting knurled tips C = Flat tips D = Concave/Convex tips (1+1) E = Self adjusting flat tips		
6	<b>SENSOR</b> N = No sensor (with protection plate) K = Electronic sensor PNP, M12 (DF-K) J = Electronic sensor NPN, optical (DF-J) Y = Electronic sensor PNP, M12 (DF-Y) white LED		

**S** | Single arm



\* TOLERANCE BETWEEN DOWELS ± 0,02, BETWEEN SCREW HOLES ± 0,1



Sensors

Tips

Electronic (optical)  
 DF-K PNP M12  
 DF-J NPN M12  
 DF-Y PNP M12 White LED

A  
 Knurled  
 LGPK6940A-L  
 LGPK6940A-C

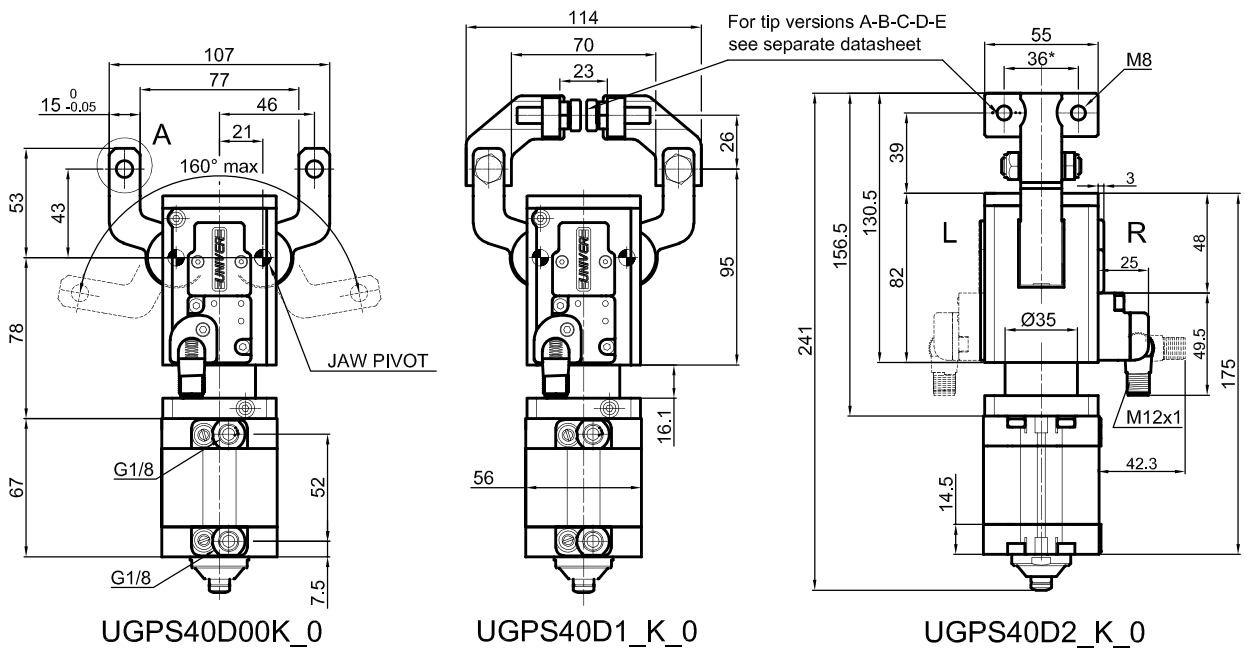
B  
 Knurled  
 Self adjusting  
 LGPK6940B-L  
 LGPK6940B-C

C  
 Flat  
 LGPK6940C-L  
 LGPK6940C-C

D  
 Concave/Convex  
 LGPK6940D-C

E  
 Flat  
 Self adjusting  
 LGPK6940E-L  
 LGPK6940E-C

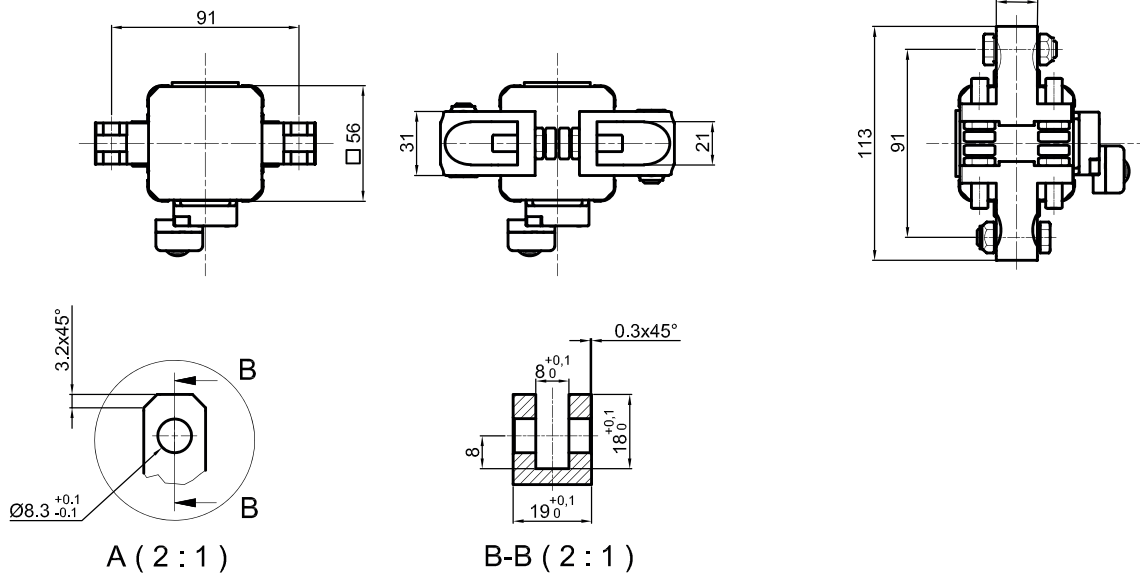
**D** Double arm



UGPS40D00K\_0

UGPS40D1\_K\_0

UGPS40D2\_K\_0



A (2 : 1)

B-B (2 : 1)

\* TOLERANCE BETWEEN DOWELS ± 0,02, BETWEEN SCREW HOLES ± 0,1

**Sensors**



Electronic (optical)

- DF-K PNP M12
- DF-J NPN M12
- DF-Y PNP M12 White LED

**Tips**



Knurled

LGPK6940A-L



Knurled  
Self adjusting

LGPK6940B-L



Flat

LGPK6940C-L



Concave/Convex

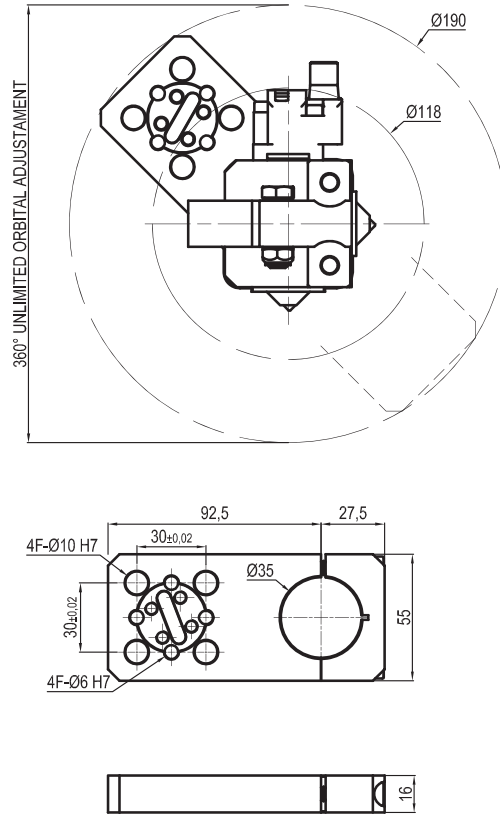
LGPK6940D-L



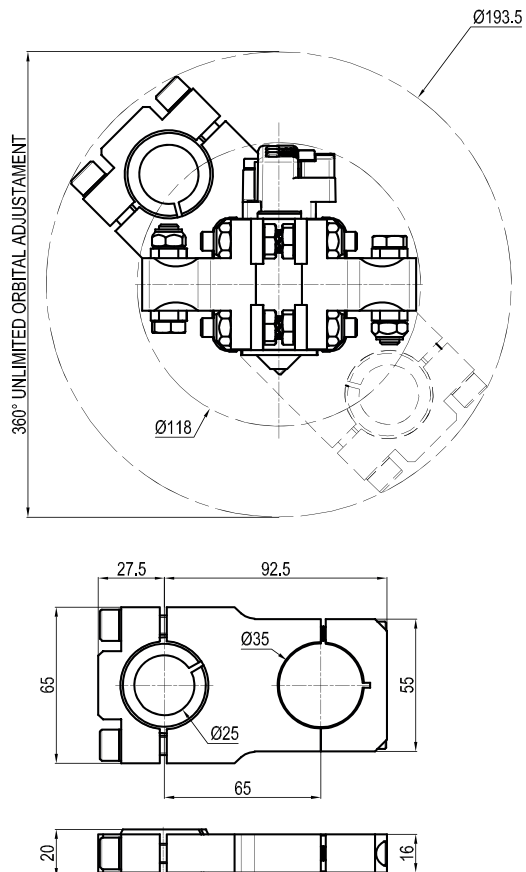
Flat  
Self adjusting

LGPK6940E-L

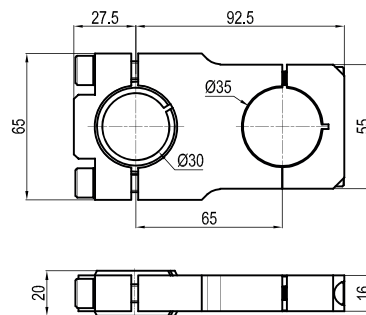
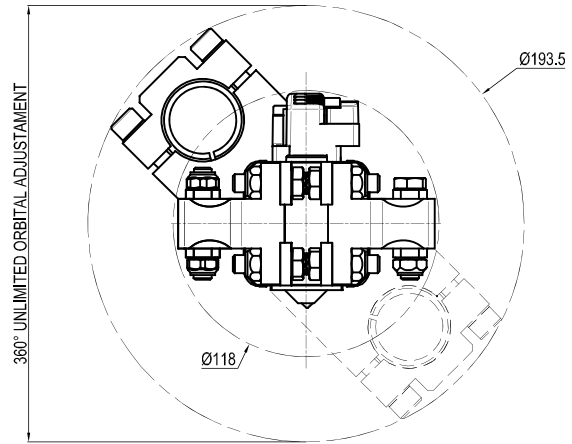
**1** Middle flange mount  
LGP40MP



**2** 360° Orbital mount  
Ball Ø25 - LGP40MO25

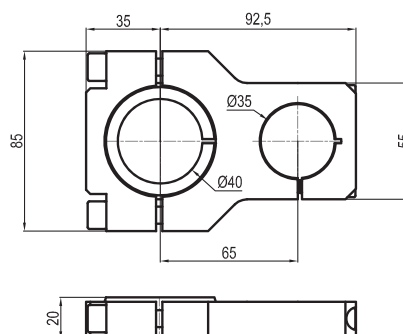
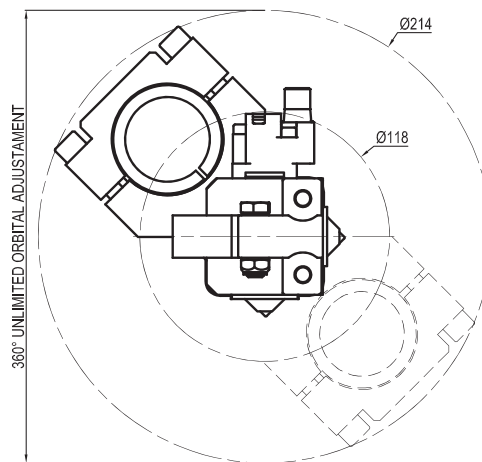


**3** 360° Orbital mount  
Ball Ø30 - **LGP40MO30**

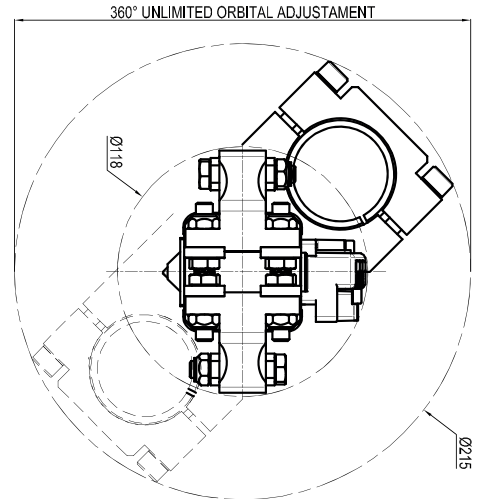
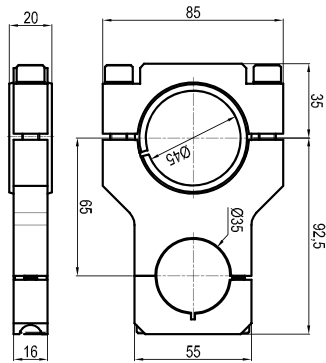


4

**4** 360° Orbital mount  
Ball Ø40 - **LGP40MO40**

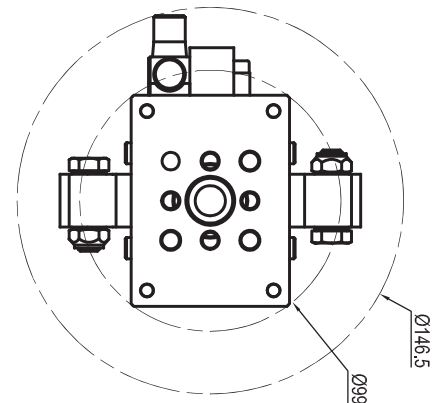
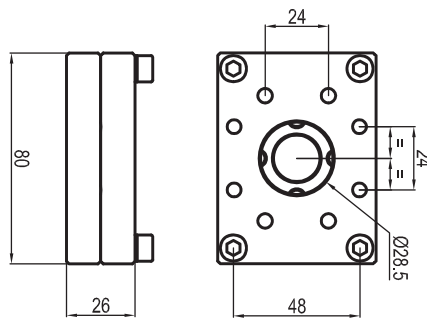


**5** 360° Orbital mount  
Ball Ø45 - **LGP40MO45**

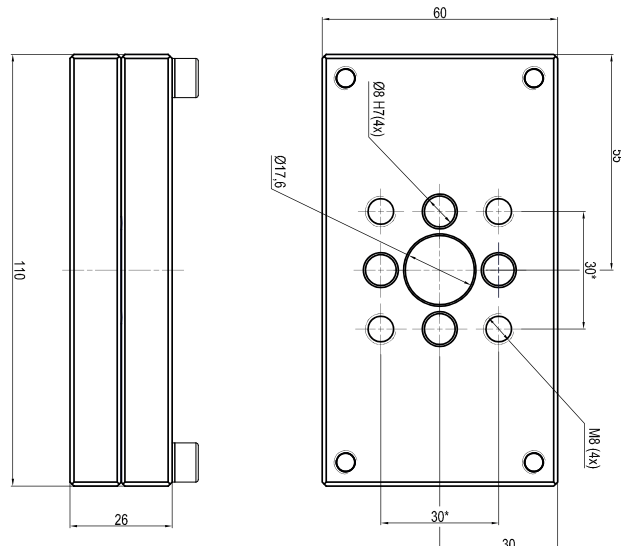
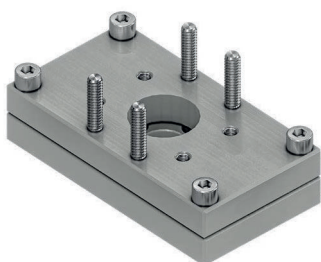


4

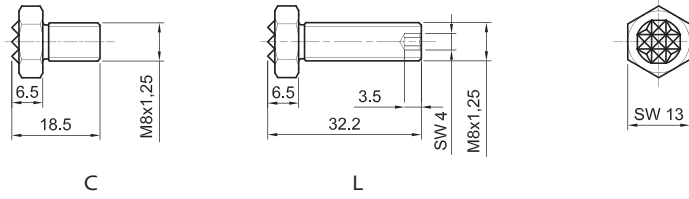
**6** Rear flange mount  
**LGP40PT080**



**7** Rear flange mount  
**LGP40PT110**

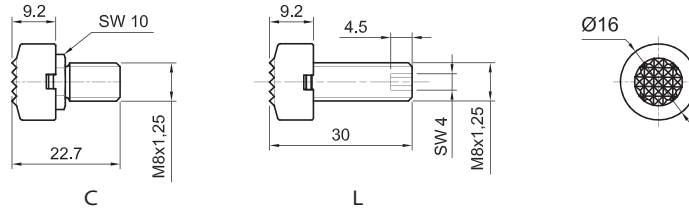


**A** Knurled



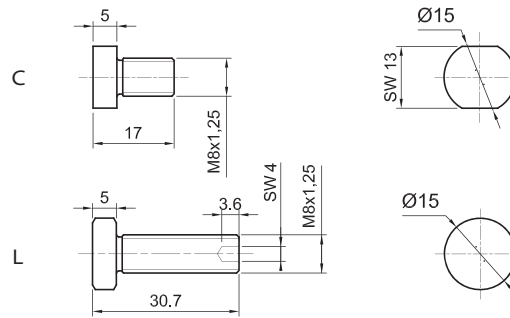
Tips	Weight
LGPK6940A-L	19g
LGPK6940A-C	14g

**B** Knurled  
Self adjusting



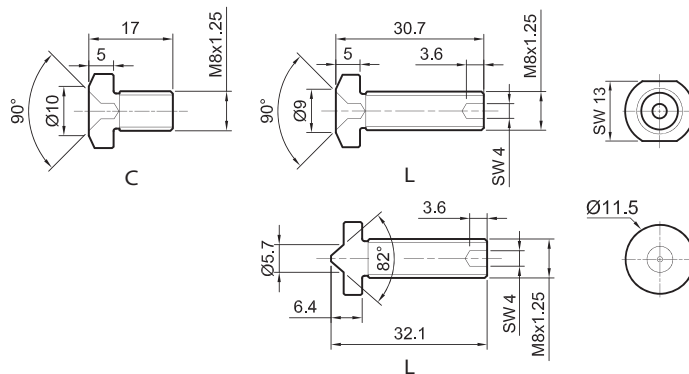
Tips	Weight
LGPK6940B-L	22g
LGPK6940B-C	17g

**C** Flat



Tips	Weight
LGPK6940C-L	20g
LGPK6940C-C	14g

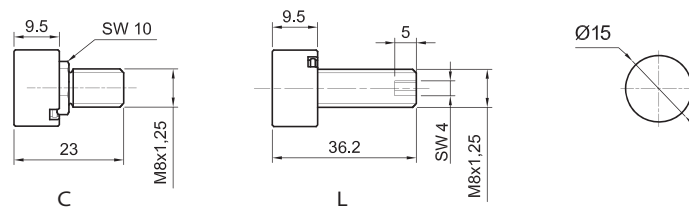
**D** Concave/Convex



Concave	
Tips	Weight
LGPK6940D-L	19g
LGPK6940D-C	13g

Convex	
Tips	Weight
LGPK6940D-L	19g

**E** Flat  
Self adjusting



Tips	Weight
LGPK6940E-L	24g
LGPK6940E-C	19g