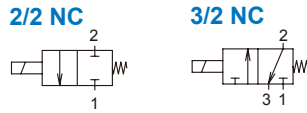
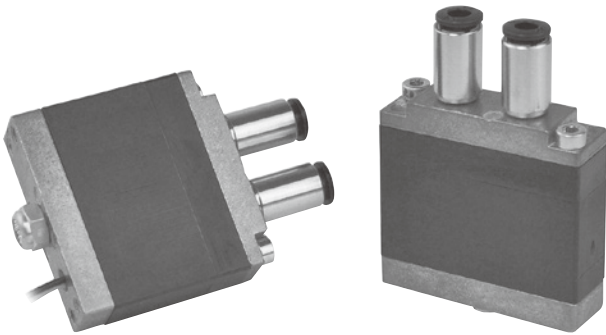


MVDA-120 series

DIRECT ACTING TYPE COMPACT SOLENOID VALVE



Features

- Flow rate 100 Nℓ/min.
- Response time < 2ms.
- Product life: 500 million switching cycles.
- Ultra response frequency: 300Hz.

Specification

Model	2E1-KK	3E1-KK	3E1-DC12
No. of port	2	3	
No. of position	2		
Medium	Non-lubricated dry air, Neutral gases		
Operating fluid temp.	-10~+50°C		
Operating pressure range	0~0.8 MPa	0.4~0.8 MPa	
Flow rate	100 N ℓ/min	80 N ℓ/min	
Response time	ON	< 2 ms	< 5 ms
	OFF	< 2 ms	< 1.3 ms
Ambient temperature	-10~+50°C		
Filtration rating	min. 40 μm		
Voltage	Speed-up: DC24V, Hold: DC5V	DC12V	
Power consumption	0.8 W (Hold)	1 W	
Max. operating frequency	300 Hz (at 250Hz with driver board)	150 Hz	
IP protection class	IP62		
Weight	35 g	70 g	

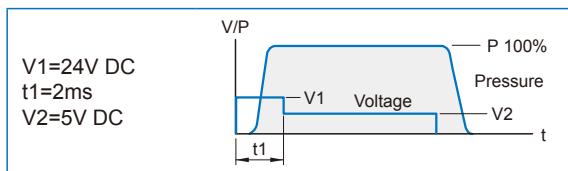
* 3E1-DC12 is make to order.

Order example

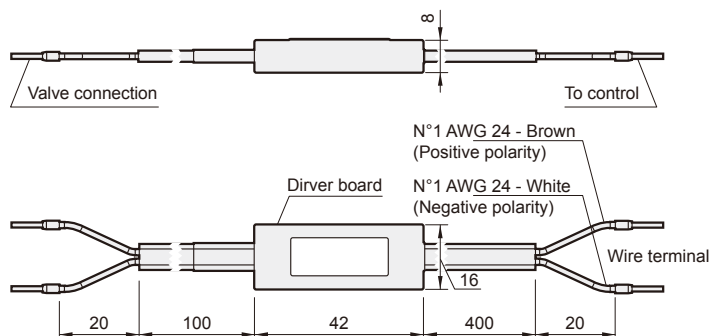
MVDA — 120 — 2E1 — NC — KK — S

MODEL	BODY WIDTH	Port	Voltage	Wire
		2E1-NC: 2 way (2 port)	KK: DC24V / DC5V (Speed-up in tension)	C: Without driver board S: With driver board (24/5V Signal converter)
		3E1-NC: 3 way (3 port)	Speed-up: DC24V, hold: DC5V	
		3E1-NC: 3 way (3 port)	DC12: DC12V	C: Without driver board

KK type electrical control

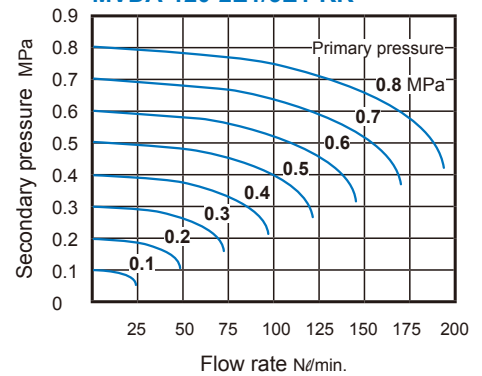


The wire with driver board (S) dimensions

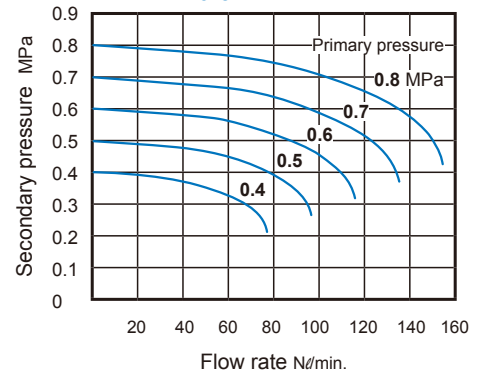


Flow features

MVDA-120-2E1/3E1-KK



MVDA-120-3E1-DC12



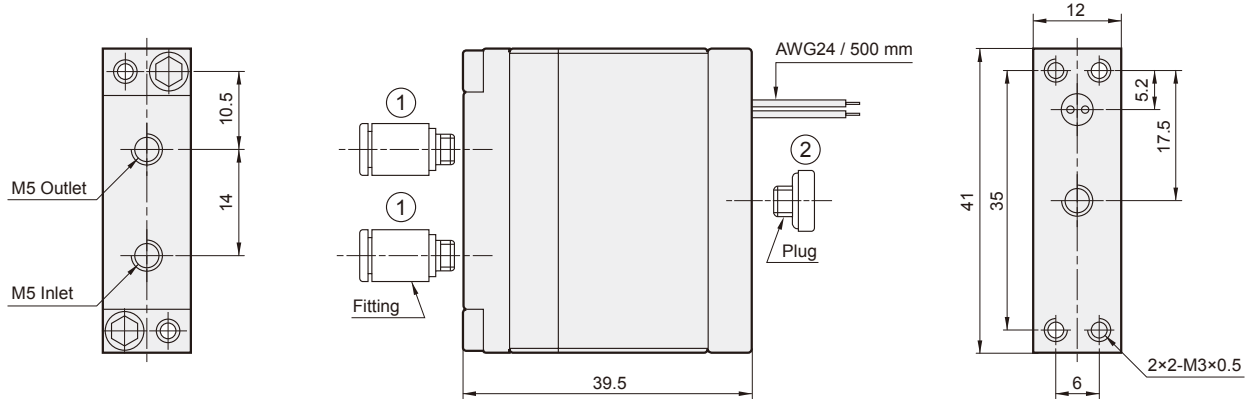
MVDA-120 Dimensions



DIRECT ACTING TYPE COMPACT SOLENOID VALVE

Mindman

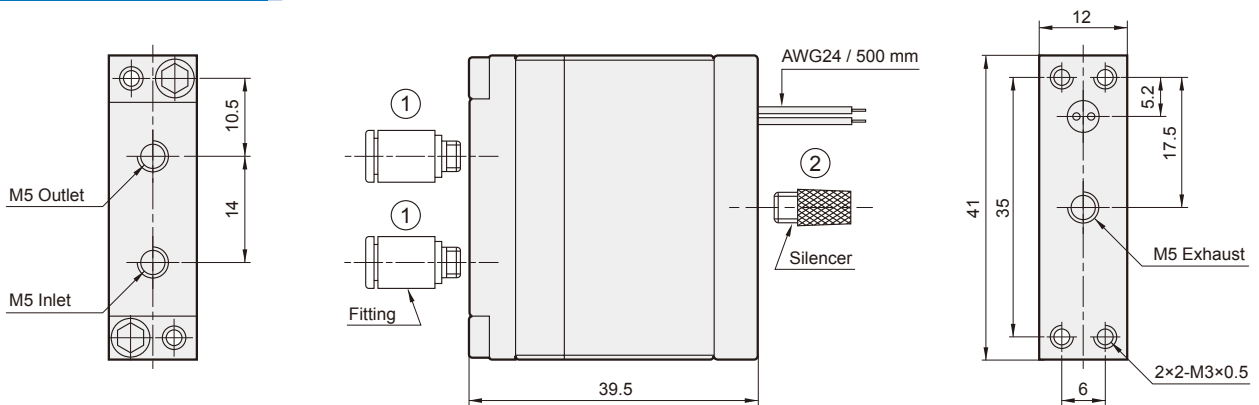
MVDA-120-2E1



Accessories

No.	Quantity	Description
1	2	Fitting $\varnothing 4$
2	1	Plug

MVDA-120-3E1



Accessories

No.	Quantity	Description
1	2	Fitting $\varnothing 4$
2	1	Silencer