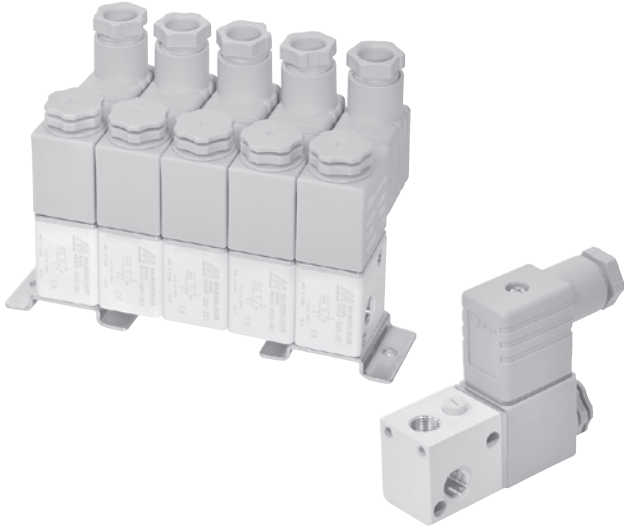


MVDC-220 series

DIRECT ACTING TYPE SOLENOID VALVE



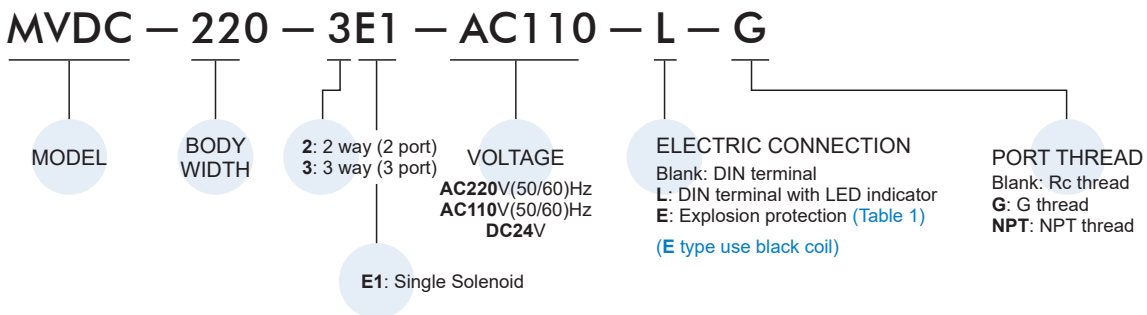
mindman



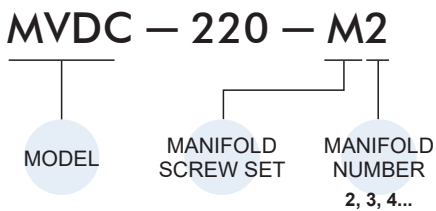
Specification

| Model | 2E1 | 3E1 |
|--------------------------|-------------------------------|-----|
| Bore No. | 6A | |
| Port size | 1/8 | |
| No. of port | 2 | 3 |
| No. of position | 2 | |
| Medium | Air | |
| Operating perssure range | 0~0.7 MPa | |
| Proof pressure | 1 MPa | |
| Effective orifice | 0.8 mm ² | |
| Reponse time | 20 ms | |
| Ambient temperature | -5~+50°C (No freezing) | |
| Voltage | AC110V, 220V (50/60)Hz, DC24V | |
| Power consumption | AC=4.8/4.4VA, 6/4.9VA, DC=2W | |
| Available voltage range | ±10% | |
| Insulation class | F class | |
| Weight | 155 g | |

Order example of valve



Order example of manifold screw set



Order example of bracket

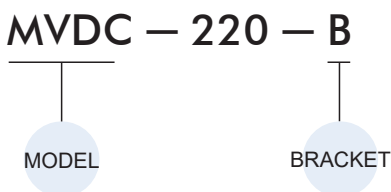
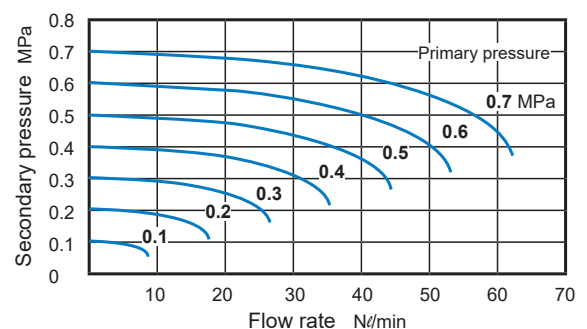


Table 1

Property for explosion-proof type

| | |
|-------------------------|---------------------------------|
| Anti-explosion class | EEx m II T4 |
| Voltage | AC110V, 220V, (50/60)Hz, DC24V. |
| Power consumption | AC=4.4VA DC=5W |
| Available voltage range | ±10% |
| Insulation class | F class |
| Wire length | 3 m |

Flow features



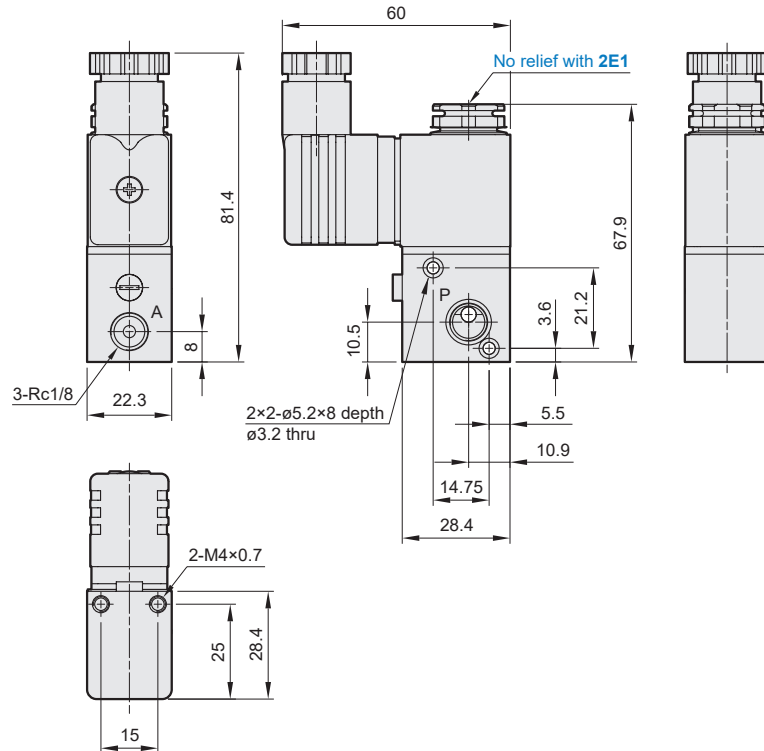
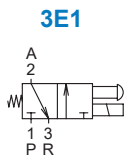
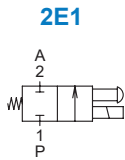
MVDC-220 Dimensions / Mounting accessories



DIRECT ACTING TYPE SOLENOID VALVE

Mindman

MVDC-220



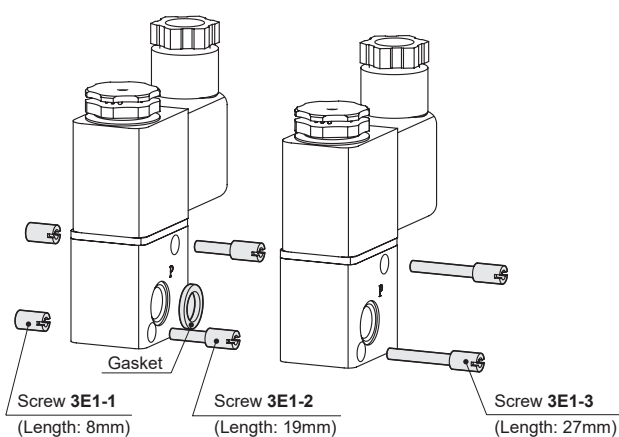
Mounting accessories

MVDC-220-M*

Manifold screw set

MVDC-220-B

Bracket



1. Screw 3E1-1 & screw 3E1-2: for the first station.
2. Gasket & Screw 3E1-3: for the second and other station.

