

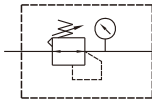
MAR501 series

PRESSURE REGULATOR



Option: **MP41**

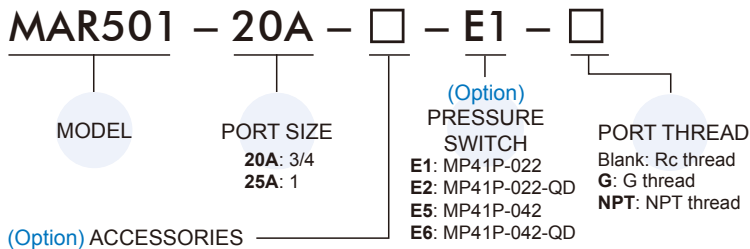
Symbol



Specification

Model	MAR501	
Bore No.	20A	25A
Port size	3/4	1
Medium	Air	
Max. operating pressure	1.5 MPa	
Proof pressure	2 MPa	
Regulated pressure range	0.05~0.85 MPa	
Repeatability	±7% F.S.	
Ambient temperature	- 5~+60°C (No freezing)	
Attachment	Pressure gauge(PG-20),L-type bracket	
Weight	1460 g	

Order example



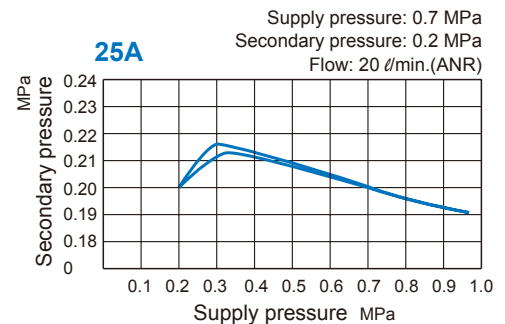
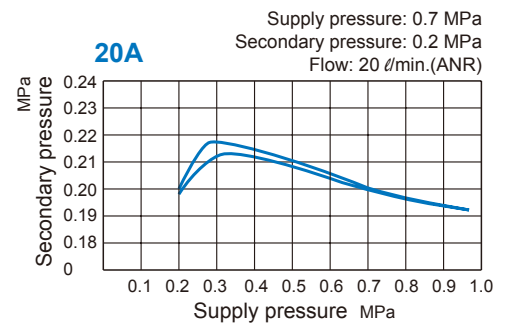
(Option) ACCESSORIES

Pressure gauge	Panel nuts
Blank: Pressure gauge (PG-20)	J: Panel nuts
C: External pressure gauge (PG-40) + Gauge adapter set (A-MAR302)	
A: Gauge adapter set (A-MAR302)	

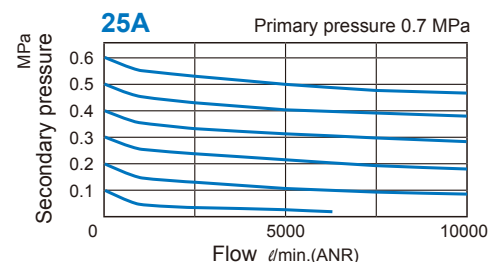
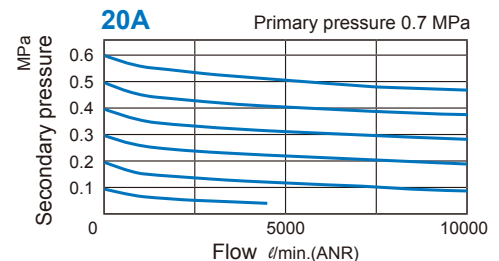
* PG-40 (C), A-MAR302 (A) and MP41 (E*) can not be selected at the same time.

* Refer to page 5-11 for the option of digital pressure switch MP41 (E*).

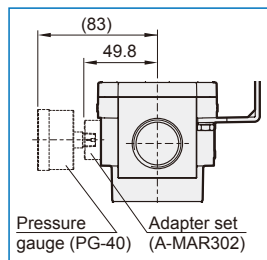
Pressure characteristics



Flow feature



Accessories



Panel mounting hole

