

# UCIM 40

Pneumatic power clamps Ø40 mm with hand lever, interchangeable with Ø50-63 mm

Pneumatic power clamps size Ø40 mm with fixing patterns interchangeable with size Ø50-63 mm, compensation system, toggle-joint mechanism and stepless adjustable opening angle, typically used for handling and holding metal sheets in welding applications

- Lightweight aluminium construction
- Compact dimensions
- Integrated compensation system up to 2 mm
- Hand lever mount on both sides
- Fully optical electronic sensor or pneumatic sensor
- Fixing pattern on the front side
- Manual unlocking in case of air loss
- Self-holding system for open position available
- Clamping arm in aluminium

## CHARACTERISTICS

Operating temperature	5° ÷ 45° C
Min./Max. Operating pressure	0,4 / 0,6 MPa
Opening angle*	0° ÷ 135°
Bore Ø	40 mm
Holding moment	600 Nm
Clamping moment (0,5 MPa)	170 Nm
Weight (clamping arm not included)	2,1 Kg
Pneumatic supply ports	G1/8 on both sides
Sensor	electronic (optical)
Supply voltage	10 ÷ 30 Vdc
IP code	IP65

\*The opening angle range may vary according to the arm position and style.

## CODIFICATION KEY

UC	I	M	40	O	E	A	N	K	0	
1	2	3	4	5	6	7	8	9	10	11



COMPENSATION



LIGHTWEIGHT



IRREVERSIBLE



ANGLE ADJUSTMENT



OPTICAL SENSOR



COMPACT

**1** SERIES  
UC = UNICLAMP Power clamps

**2** STANDARD  
I = Interchangeable with size Ø50/63 mm

**3** VERSION  
M = Pneumatic with hand lever

**4** SIZE  
40 = Ø40 mm

**5** ARM POSITION  
V = 90°

O = 180°

N = No arm

**6** ARM STYLE  
C = Central, 15 mm offset  
D = Right, 15 mm offset  
S = Left, 15 mm offset  
E = Central, 45 mm offset  
F = Right, 45 mm offset  
L = Left, 45 mm offset  
N = No arm  
For other versions contact our Sales Dept.

**7** ARM TYPE  
A = Aluminium  
S = Steel  
N = No arm

**8** OPTION  
N = Standard  
A = Preset for self-holding system

**9** SENSOR  
N = No sensor (with protection plate)  
K = Electronic sensor PNP, M12 (DF-K)  
D = Pneumatic sensor (DF-UPNW)  
J = Electronic sensor NPN, optical (DF-J)  
Y = Electronic sensor PNP, M12 (DF-Y) white LED

**10** PRODUCT REVISION  
Assigned by UNIVER

**11** ATEX  
X = ATEX option  
See ATEX Catalogue for types and versions

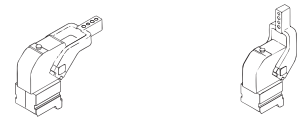
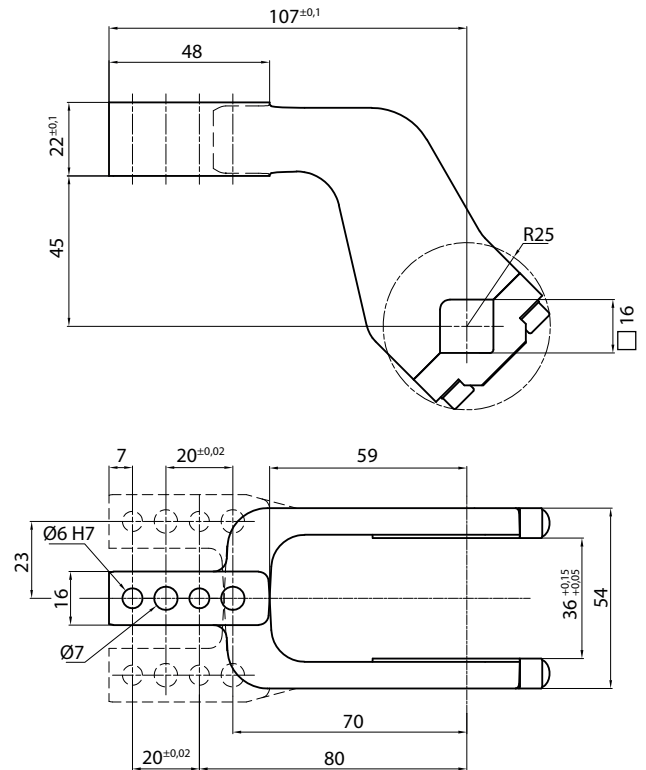
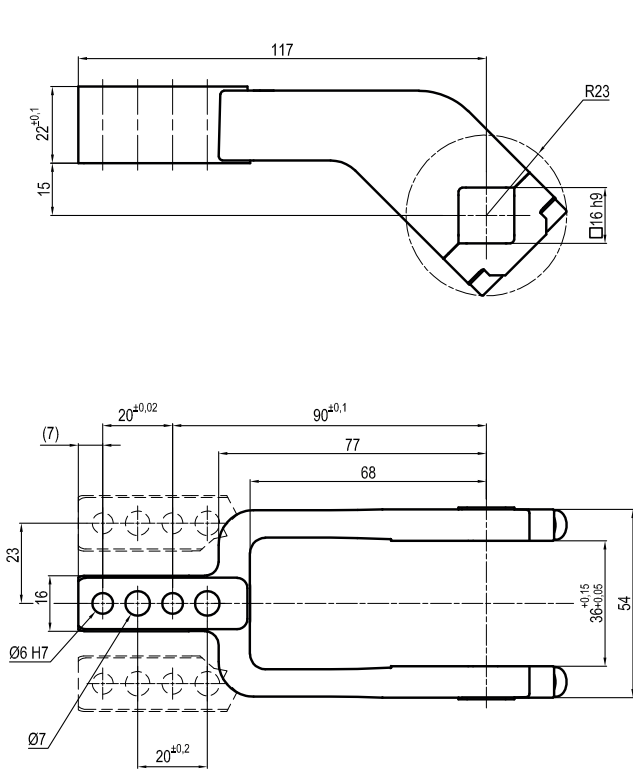


## Clamping Arms

### Arm Offset 15mm

### Arm Offset 45mm

2



Armcode	Offset	Material	Arm style	Weight (Kg)	Opening angle (90°)	Opening angle (180°)
LKP01CST	15	ALUMINIUM	CENTRAL	0,2	0±135°	0±120°
LKP01DST	15	ALUMINIUM	RIGHT	0,2	0±135°	0±120°
LKP01SST	15	ALUMINIUM	LEFT	0,2	0±135°	0±120°
IKP40E	45	ALUMINIUM	CENTRAL	0,3	0±120°	0±120°
IKP40F	45	ALUMINIUM	RIGHT	0,3	0±120°	0±120°
IKP40L	45	ALUMINIUM	LEFT	0,3	0±120°	0±120°

## Sensors

## Accessories



Electronic (optical)

Pneumatic

Handlever

Self holding system

DF-K PNP M12  
DF-J NPN M12  
DF-Y PNP M12 White LED

DF-UPNW

UBF2540

UBK46P16 For arm 15 offset  
UBK46P16-45 For arm 45 offset